



**POWER TO SHAPE**

# **CIRCULAR MAGNETIC PULSE WELDING**

**FOR HVAC, DRIVESHAFT  
& FILTERS**



## **CONTACT**

[www.bmax.com](http://www.bmax.com)  
FR +33 5 34 61 16 60  
US + 1 248 462 7828  
[contact@bmax.com](mailto:contact@bmax.com)

# WHY BMAX?

Bmax is world leader in Magnetic Pulse Technology. Bmax's capabilities include:



- R&D
- RAPID PROTOTYPING
- HIGH VOLUME PRODUCTION
- EQUIPMENT LEASING
- SERVICE
- TESTING
- SPARE PARTS
- GLOBAL FOOTPRINT

## MAGNETIC PULSE WELDING (MPW)

MPW is a solid state, cold welding process generated by a high speed collision between two metals.

**GREEN PROCESS**

**LOWER COSTS**

**NO INTERMETALLICS**

**NO HEAT AFFECTED ZONE**

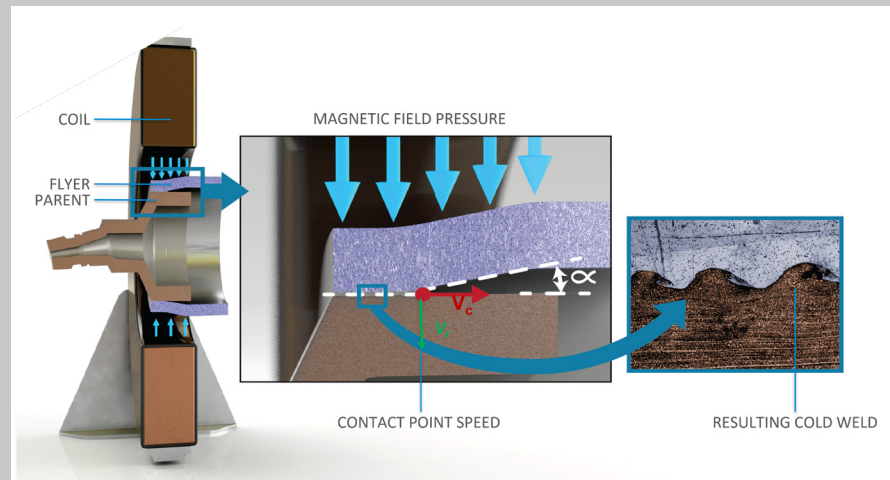
### Automotive



### Aerospace



### MPW PROCESS



### IN TESTING

The parent material fails prior to the welded area

#### BURST TEST

Pressure vessel,  
Al to Al



#### TENSILE TEST

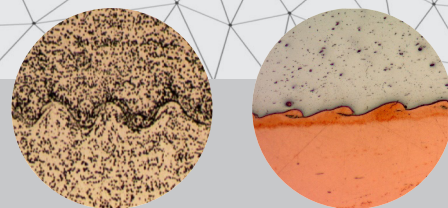
Flat weld,  
6000 series Al  
to 6000 series Al



### SEAMLESS PRESSURE RESISTANT WELDING



### CROSS SECTION MICROGRAPH



Aluminum to Copper (wavy interface)